

ANNUAL REPORT 2024-2025 SEASON

OVERVIEW

Second Stage's 46th season was one of change and new adventures. Interim Artistic Director Bennett Leak led us through an Off-Broadway transition from the beloved Tony Kiser Theater to a new space at Pershing Square's Signature Center. Leak and Interim Executive Director Lisa Post paved a path for our new leadership, Artistic Director Evan Cabnet and Executive Director Adam Siegel. After a decade of working together at Lincoln Center Theater, Cabnet and Siegel are bringing fresh ideas to Second Stage this coming season, continuing to uphold our mission of championing contemporary American playwrights.



Kevin Brockman,
Co-Chair



Terry Lindsay
Co-Chair

Highlights of the 2024–2025 season included:

- Producing Amy Berryman's *Walden* as our final production at the Tony Kiser Theater.
- Producing Leslye Headland's *Cult of Love* starring Mare Winningham, Shailene Woodley, and Zachary Quinto among others.
- Premiering new works in our new Off-Broadway space, the Irene Diamond Stage at Pershing Square Signature Center, *On the Evolutionary Function of Shame* by D.A. Mindell, and *Lunar Eclipse* by Donald Margulies.
- The Steppenwolf Theatre Company's production of Branden Jacobs-Jenkins' *Purpose*, produced in association with Second Stage Theater, completing a Broadway run in our Helen Hayes Theater.
- Welcoming over 20 schools from all 5 Boroughs to our Student Matinee program.

As we reflect on the 2024–2025 season, we are filled with gratitude for the unwavering support of our vibrant community during this period of change. A heartfelt thank you to our Board of Trustees, artists, supporters, school and nonprofit partners, and our incredible staff for making all of this possible.

Two handwritten signatures in black ink. The first signature is stylized and appears to be 'Evan Cabnet'. The second signature is more legible and appears to be 'Adam Siegel'.



TABLE OF CONTENTS

2	Main Stage Productions	13	Staff
6	Next Stage Festival	14	Special Events
8	Our Broadway Home — The Hayes	16	Our Donors and Supporters
10	New Play Development	16	Individual Supporters
11	Community Programs and Education	18	Corporate Membership Program
		18	Foundations
		19	Board

MISSION STATEMENT

Second Stage Theater is dedicated to producing modern plays and musicals from contemporary American writers. Each season, we welcome over 125,000 audience members and employ hundreds of artists. Over the past 46 years, our programs have been a springboard for artists and works such as Lynn Nottage's *Clyde's*, Larissa FastHorse's *The Thanksgiving Play*, Branden Jacobs-Jenkins' *Appropriate* and *Purpose*, and Benj Pasek, Justin Paul, and Steven Levenson's *Dear Evan Hansen* among many others. As an organization dedicated to expanding the American theater canon, our mission has a ripple effect that reaches the tri-state area, regional theaters, and the country.

MAIN STAGE PRODUCTIONS



Zoë Winters, Motell Foster, and Emmy Rossum in WALDEN. Photo by Joan Marcus.

WALDEN

BY **AMY BERRYMAN**
DIRECTED BY **WHITNEY WHITE**

CAST: Motell Foster, Emmy Rossum, Zoë Winters

UNDERSTUDIES: Joanne Goodhart, Manu Kumasi

SCENIC DESIGN:
Matt Saunders

COSTUME DESIGN:
Qween Jean

LIGHTING DESIGN:
Adam Honoré

SOUND DESIGN:
Lee Kinney

**HAIR, WIG, &
MAKEUP DESIGN**
Tommy Kurzman

**PRODUCTION
STAGE MANAGER:**
Garrett Kerr

**ASSISTANT
STAGE MANAGER:**
Narissa Agustin

CASTING:
Taylor Williams, CSA

AUDIENCE: 11,532



Emmy Rossum and Zoë Winters in WALDEN.
Photo by Joan Marcus.

AWARDS

OUTER CRITICS CIRCLE:
John Gassner Award (new American play)



The ensemble of CULT OF LOVE. Photo by Joan Marcus.

CULT OF LOVE

BY **LESLYE HEADLAND**
DIRECTED BY **TRIP CULLMAN**

CAST: Molly Bernard, Roberta Colindrez, Barbie Ferreira, Rebecca Henderson, Christopher Lowell, Zachary Quinto, David Rasche, Christopher Sears, Mare Winningham, Shailene Woodley

UNDERSTUDIES: Peter Bradbury, Billy Cohen, Vero Maynez, Rachel Prather, Luisa Sermol

SCENIC DESIGN:
John Lee Beatty

COSTUME DESIGN:
Sophia Choi

LIGHTING DESIGN:
Heather Gilbert

SOUND DESIGN:
Darron L. West

HAIR & MAKEUP DESIGN:
Liz Printz

MUSIC SUPERVISION:
Jacinth Greywoode

DRAMATURG:
Eleanor Skimin

PRODUCTION STAGE MANAGER:
John C. Moore

ASSISTANT STAGE MANAGER:
Lilian McGrail

CASTING:
Jim Carnahan, CSA
and Liz Fraser, CSA

AUDIENCE: 43,619

This production was supported by a gift from the Blanche and Irving Laurie Foundation.



Shailene Woodley, Christopher Sears, Rebecca Henderson, and Zachary Quinto in CULT OF LOVE. Photo by Joan Marcus.





Reed Birney and Lisa Emery in LUNAR ECLIPSE. Photo by Joan Marcus.

LUNAR ECLIPSE

BY **DONALD MARGULIES**
DIRECTED BY **KATE WHORISKEY**

CAST: Reed Birney, Lisa Emery

UNDERSTUDIES: Margaret Daly, John Jellison

SCENIC DESIGN:
Walt Spangler

VIDEO DESIGN:
S. Katy Tucker

COSTUME DESIGN:
Jennifer Moeller

ORIGINAL MUSIC:
Grace McLean

LIGHTING DESIGN:
Amith
Chandrashaker

**PRODUCTION
STAGE MANAGER:**
Sara Sahin

SOUND DESIGN:
Sinan Refik Zafar

**ASSISTANT
STAGE MANAGER:**
Narissa Agustin



Lisa Emery and Reed Birney in LUNAR ECLIPSE.
Photo by Joan Marcus.

CASTING:
The Telsey Office;
Charlie Hano, CSA,
Karyn Casl, CSA

AUDIENCE: 11,560



THE STEPPENWOLF THEATRE COMPANY PRODUCTION OF

PURPOSE

PRODUCED IN ASSOCIATION WITH SECOND STAGE THEATER

BY **BRANDON JACOB-JENKINS**

DIRECTED BY **PHYLICIA RASHAD**

CAST: LaTanya Richardson Jackson,
Harry Lennix, Jon Michael Hill,
Glenn Davis, Alana Arenas, Kara Young

UNDERSTUDIES: Sojourner Brown, Petronia Paley, Esau Pritchett, Chris Myers

SCENIC DESIGN:
Todd Rosenthal

COSTUME DESIGN:
Dede M. Ayite

LIGHTING DESIGN:
Amith
Chandrashaker

SOUND DESIGN:
Michael Bodeen,
Rob Milburn

AWARDS

DRAMA DESK AWARDS: Outstanding Featured Performance in a Play — Kara Young; Outstanding Play — Brandon Jacobs-Jenkins; New York Drama Critics' Circle; Best Play — Brandon Jacobs-Jenkins

PULITZER PRIZE: Pulitzer Prize for Drama — Brandon Jacobs-Jenkins

THEATRE WORLD AWARDS: Outstanding Debut Performance — Alana Arenas

TONY AWARDS: Best Featured Actress in a Play — Kara Young; Best Play — Brandon Jacobs-Jenkins

**PRODUCTION
STAGE MANAGER:**
Tiffany N. Robinson

**ASSISTANT
STAGE MANAGER:**
Derric Nolte

CASTING:
Calleri Jensen Davis

AUDIENCE: 83,293

NEXT STAGE FESTIVAL



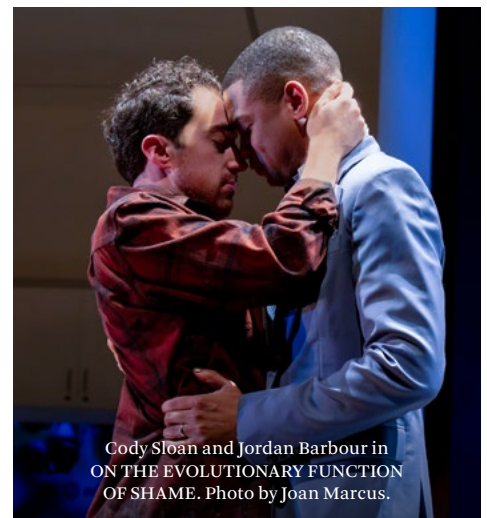
Kayli Carter and Cody Sloan in ON THE EVOLUTIONARY FUNCTION OF SHAME. Photo by Joan Marcus.

2025 FESTIVAL PRODUCTION

ON THE EVOLUTIONARY FUNCTION OF SHAME

BY **D.A. MINDELL**

DIRECTED BY **JESS McLEOD**



Cody Sloan and Jordan Barbour in
ON THE EVOLUTIONARY FUNCTION
OF SHAME. Photo by Joan Marcus.

CAST: Jordan Barbour, Kayli Carter, Elizabeth Ramos, Imani Russell, Cody Sloan, Ryan Jamaal Swain

UNDERSTUDIES: Mace Cowart, Marx, Aviva Pressman, Bligh Voth

SCENIC DESIGN:
You-Shin Chen

COSTUME DESIGN:
Hahnji Jang 장한지

LIGHTING DESIGN:
Barbara Samuels,
Keith Parham

SOUND DESIGN:
Bailey Trierweiler

**PRODUCTION
STAGE MANAGER:**
Genevieve Ortiz

**ASSISTANT
STAGE MANAGER:**
Nat Kelley DiMario

CASTING:
The Telsey Office;
Charlie Hano, CSA,
Karyn Casl, CSA

AUDIENCE: 2,723

THE JUDITH CHAMPION READING SERIES IS FUNDED BY A GRANT FROM THE JUDITH CHAMPION CHARITABLE FUND AND MEL LITOFF.

Judith Champion was introduced to music and theater by her parents, which led to a love of the arts becoming central to her life. “Support what is most important to you,” she believed, “and one thing that is important to me is to nurture new playwriting talent so that Theater flourishes for future generations.”



THE SINGULARITY PLAY

BY JAY STULL

DIRECTED BY KEENAN TYLER OLIPHANT

MARCH 3, 2025



WIPEOUT

BY REAL DE ASUA

DIRECTED BY MEI ANN TE

MARCH 10, 2025



YOU ARE CORDIALLY INVITED TO THE END OF THE WORLD

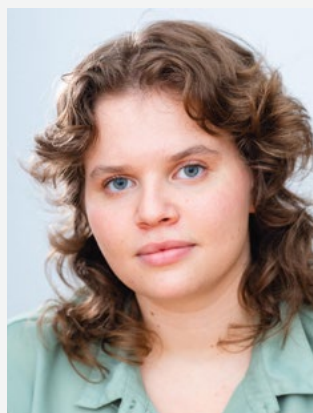
BY KEIKO GREEN

DIRECTED BY ZHAILON LEVINGSTON

MARCH 17, 2025

THE NANCY DENOVAN MUSICAL READING IS FUNDED BY A GRANT FROM CHRISTOPHER AND DAVID R. MURRAY.

David's late mother, Nancy Denovan Murray, was a multidisciplinary artist: a singer, filmmaker, and painter. She believed in the power of the arts to make sense of our present and positively influence our future.



INSIDE VOICES

BOOK BY ROSS GOLAN CO-WRITTEN BY DANIELLE KOENIG

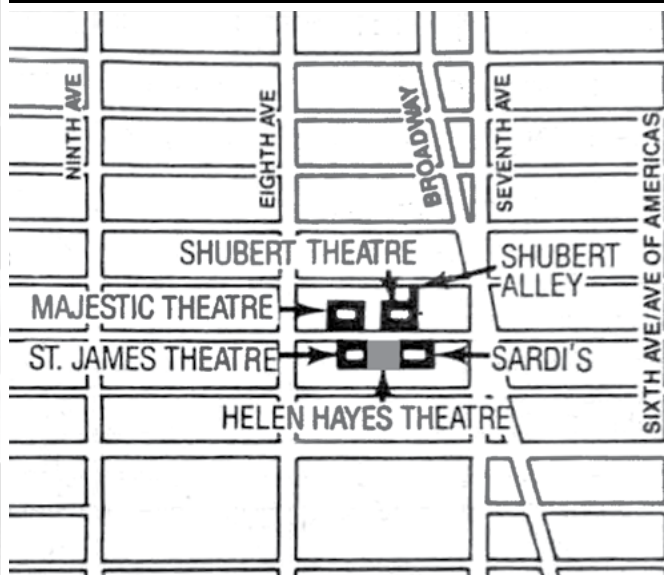
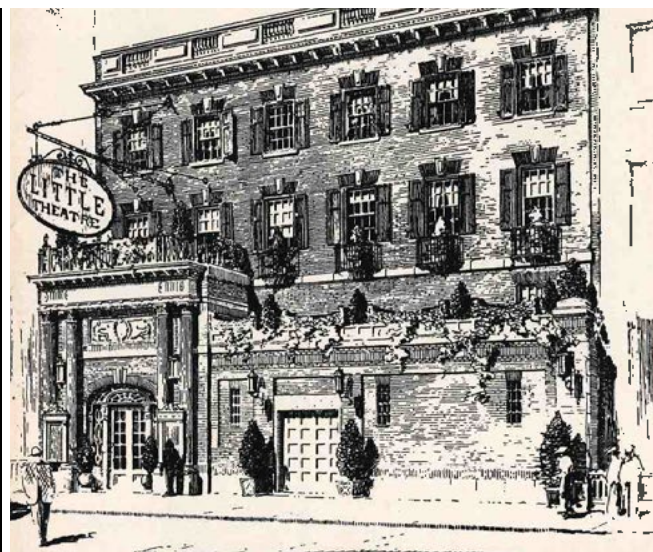
MUSIC & LYRICS BY ROSS GOLAN DIRECTED BY MICHAEL MAYER

JANUARY 27, 2025

OUR BROADWAY HOME — THE HAYES

The Little Theater was built in 1912 by impresario Winthrop Ames in the neo-Georgian style. The original single-level 299-seat house was modified in 1920 when a balcony was added to expand the theater to its current 597-seat size.

This theater, the most intimate of the Broadway houses, has long been a stage for daring work. More than a century later, it continues to be home for luminary artists and groundbreaking work that shape the future of American theater.



Located on 44th Street, between 7th and 8th Avenues, beside Sardi's, across from Shubert Alley and surrounded by The St. James Theater, The Shubert Theater, The Majestic Theater, it doesn't get more New York than this.

Throughout its 113-year history, the Little Theater has served as a playhouse, a conference hall, and a broadcasting studio. The theater is a New York City Landmark building with much of the original plasterwork, light fixtures, and other details intact today.



During the 1950s and 1960s, the theater entered its TV age.

CBS used the theater as a radio studio for a time, but it was converted to television by ABC in 1958. Dick Clark's 'Saturday Beechnut Show' and 'Who Do You Trust' with Johnny Carson were broadcast from the Little Theater. In the 1960s - 1970s, the Merv Griffin Show, The David Frost Show and Beat the Clock were all broadcast from the Little Theater.



The original Helen Hayes Theater on 46th Street, along with 4 other theaters, was a victim of "The Great Theater Massacre of 1982" during which several historic theaters were demolished to make way for the 50-story Marriot Marquis. The Little Theater was renamed The Helen Hayes theater at this time and continued to present plays and concerts.

Second Stage Theater acquired the Hayes in 2015. It has been refurbished by the Rockwell Group and returned to its original purpose — to be the home of great and meaningful American plays. Since re-opening as a producing theater, it has been home to 5 Tony Award Winning Plays.



NEW PLAY DEVELOPMENT

Second Stage's New Play Development programs — including commissions, readings, and workshops — serves our mission of championing contemporary American playwrights, no matter where they are in the creative process. These programs allow us to provide a supportive environment where all artists can do their best work. These programs are an incubator for artists and works that expand the American theater canon.

READINGS AND WORKSHOPS

Readings and workshops are a critical part of the play development process. Plays are living works and need to be heard and embodied to help the writer make important discoveries and revisions.

We hosted 7 developmental readings and workshops in 2024–2025. We also hosted the Lark Playwrights Mentorship program.

FY25 READINGS AND WORKSHOPS

Lunar Eclipse — July 2024

Cult of Love — September 2024

On The Evolutionary Function of Shame —
October 2024

Meet the Cartozians — June 2025

The Visitors — August 2025

The Visitors Workshop — November 2025

Meat Suit Workshop — November 2025

ACTIVE COMMISSIONS

New York State Council on the Arts Commission —
Jahna Ferron-Smith

Second Stage Commissions —

Larissa FastHorse, Ross Golan, Danielle Stagger
Kenyon Playwrights Conference Commission —
Lauren Yee

Peter Jay Sharp Foundation Commission —
Danny Tejera



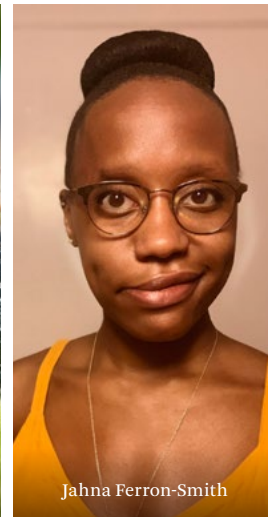
Cast and artistic team for the musical reading of INSIDE VOICES.



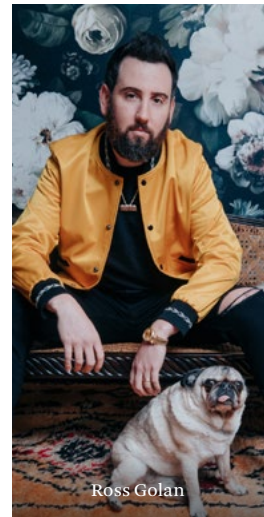
The musical director leads the cast in a reading of INSIDE VOICES.



Larissa FastHorse



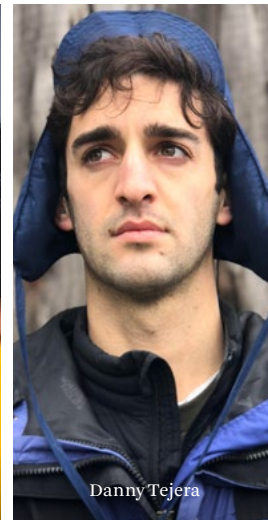
Jahna Ferron-Smith



Ross Golan



Danielle Stagger



Danny Tejera



Lauren Yee

COMMUNITY PROGRAMS AND EDUCATION

STUDENT MATINEES

We welcomed over 20 schools to our Student Matinee program, from all of New York City's 5 Boroughs. This program engages students in our productions through a show-specific study guide and post-show conversations with artists. Participating teachers receive a curriculum guide that aligns with NY State Arts Learning Standards and includes pre- and post-show activities for the classroom.

In addition to our traditional Student Matinees, we regularly partner with Hetrick Martin Institute and New York Children's Center which serve youth in foster care and non-traditional living arrangements to bring youth to our productions. Accommodating young people in foster care means inviting and welcoming them to an evening performance as their study schedules are asynchronous.

"On behalf of Culture for One, I want to express our gratitude for your generosity. Because of you, some of our most theater-loving foster youth had the chance to enjoy an unforgettable play last night, seeing *Lunar Eclipse*. Through partnerships like yours, we can reach even more youth in foster care, in meaningful ways, and aim to transform their lives through the power of the arts." — Lorena Camacho, Development Manager at Culture for One

ARTISTIC FELLOWSHIP

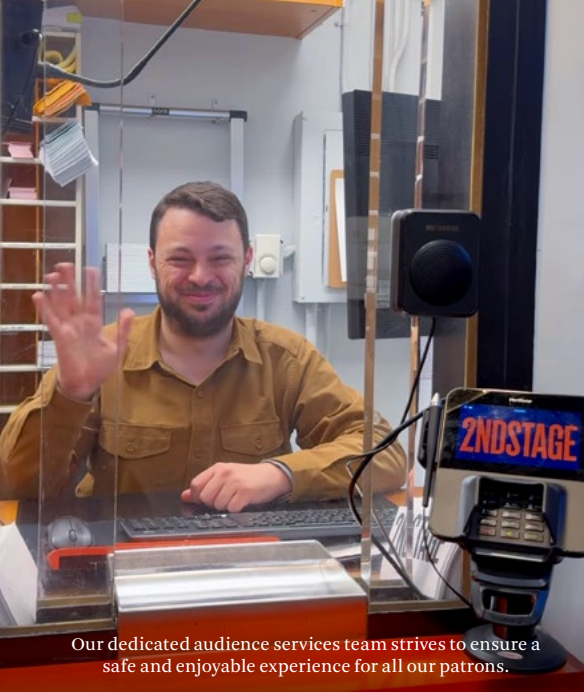
We are preparing for the second year of our Artistic Fellowship, in partnership with The Theatre Leadership Project. The Artistic Fellow program offers six months of full-time paid employment with health and retirement benefits. This allows Fellows to focus on their professional development and career advancement goals for the duration of the program. The Fellows work alongside our artistic department to participate in projects that equip them with hands-on experience.



Student group arrives for a matinee.



Student group attending a matinee.



Our dedicated audience services team strives to ensure a safe and enjoyable experience for all our patrons.



Student group meets with Second Stage staff.



Student group and cast at talkback event.

ACCESSIBILITY

Second Stage Theater is committed to making theater accessible to all audiences. We offer Open Captioning for deaf and hard of hearing patrons at all of our shows.

Other services include Audio Description for those who are blind or visually impaired and wheelchair accessibility throughout our facilities.

The Hayes Theater is fully accessible for artists and audience members. During the renovation process in 2015, we made changes that include: the installation of an elevator, the addition of an accessible box-office window, increased wheelchair seating positions throughout the auditorium, the addition of a ramp to make the stage accessible to all artists, and the installation of a Loop system to enable hard-of-hearing audience members to clearly and easily hear the performances.



GROUPS AND COMMUNITY TALKBACKS

Second Stage Theater is committed to community outreach programs that bring a wide range of audiences to our theaters. This year we were able to welcome 21 organizations to Second Stage productions with the benefits of free or subsidized tickets, as well as pre- and post-show events.

Highlights of Season 2024–2025 include:

- Welcoming young adults from Children's Village Brooklyn Residence for a performance of *Walden*, followed by a talkback with all the actors and the Production Stage Manager.
- Providing students from Terry Knickerbocker Studio with discounted tickets to see *Walden*, then hear Mr. Knickerbocker in a craft discussion with all the cast members.
- Hosting a "Trans Community Night" event at *On the Evolutionary Function of Shame*, with tabling by community organizations, an issues-oriented panel discussion with a range of community voices, and a post-show artistic talkback. Community partners included: Ten Toes Collective, GLAAD NYC Chapter, PFLAG-NY Chapter, National Queer Theater Folx, and Trans Film Collective.
- Extending special invitation to see *Lunar Eclipse* to the staff and clients of the Mount Sinai Hospital Spiritual Care community.
- Arranging a *Lunar Eclipse* talkback focusing on the work of understudies for drama students at Newark Academy.
- Providing discount codes and discounted tickets to see *Cult of Love* to organizations such as Honor Roll / Women Theater Professionals; YAI Arts and Culture, TDF Theater Access Program; 17 high schools and universities, and several university alumni clubs.



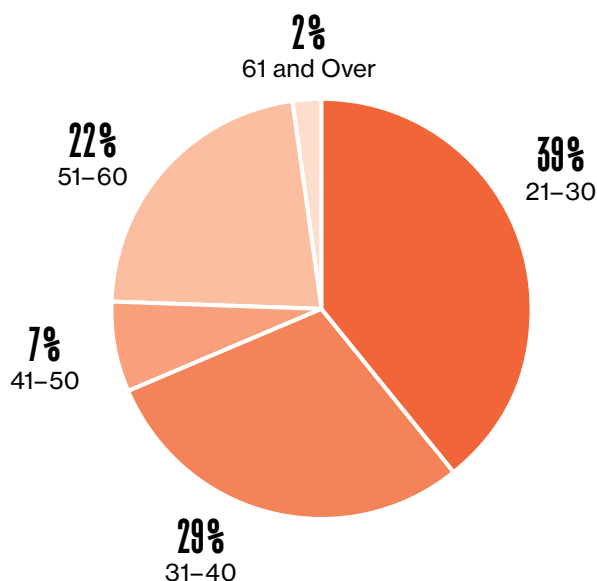
STAFF

STAFF DEVELOPMENT AND TRANSFORMATION TEAM

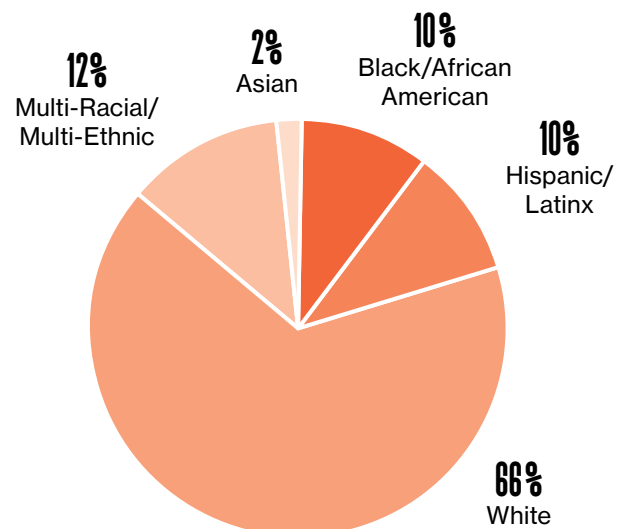
In 2021, Second Stage established a Transformation Team that works to advance our core values. The Transformation Team is a group of employees and Trustees who represent a range of social identities, departments, and levels of organizational seniority. In Season 2024–2025, the Team focused on a number of key initiatives and activities aligned with 2ST's goals, for example: implementing HR/EDI presentations at First Rehearsals and first day of Tech, recognizing cultural celebrations, incorporating employee feedback in manager performance evaluations, ensuring a wide pool of candidates, and dedicating space for core values in all recruitment processes.

STAFF DEMOGRAPHICS

AGE



ETHNICITY



Self reporting survey of the staff, Sept 2025.

SPECIAL EVENTS

GALA

The annual Gala supports artistic programming through a variety of fundraising efforts. Funds raised help us produce new work by contemporary American playwrights that is accessible and thought provoking. We support artists from readings to Broadway and could not do it without the generous support the Gala provides.

October 28, 2024 at The Pierre

HONOREES

Barbara and Rodgin Cohen

CO-CHAIRS

Terry and Bob Lindsay, Scott Miller

HOST

Brandon J. Dirden

PERFORMANCES BY

Philippe Arroyo

Leana Rae Concepcion

Ari Groover

Francis Jue

Grace Yoo



Ari Groover



Evan Cabnet



Grace Yoo



Francis Jue



Gala Host Brandon J. Dirden



Leana Rae Concepcion



Philippe Arroyo



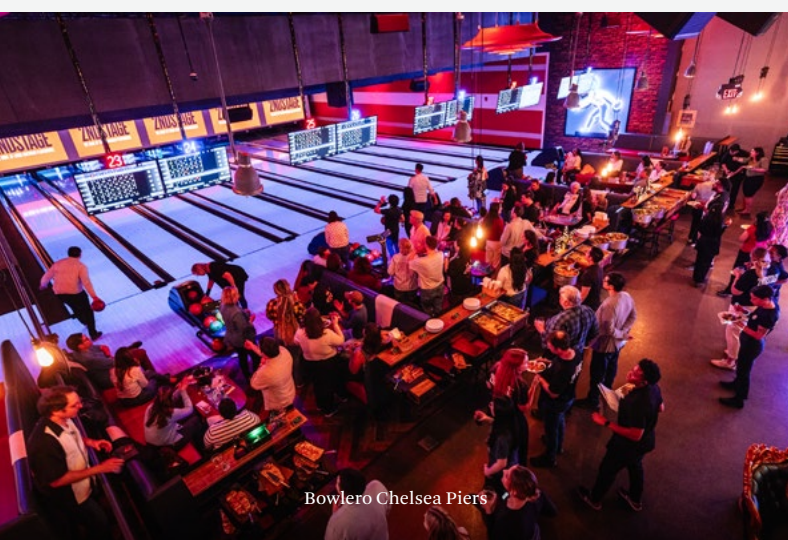
Michael R. Jackson



Ari Graynor, Tony Goldwyn, and Ira Schreck



Adam Siegel and Evan Cabnet



Bowlero Chelsea Piers

ALL-STAR BOWLING CLASSIC

Thank you to our sponsors and co-chairs for a wonderful evening. The All-Star Bowling Classic pairs Broadway stars and other theater professionals with supporters for a night of Bowling, prizes and fun.

May 5, 2025 at Bowlero Chelsea Piers

CO-CHAIRS:

Ira Schreck

Natasa and Michael Valocchi

LEAD SPONSOR:

Select Equity

CO-SPONSORS:

Altman, Greenfield & Selvaggi

BRS

Citi

Cravath, Swaine & Moore LLP

Davis Polk & Wardwell LLP

Deloitte

Kirkland & Ellis

Latham & Watkins LLP

Lindsey Goldberg

Paul, Weiss, Rifkind, Wharton & Garrison LLP

Schreck Rose Dapello Adams Berlin & Dunham

ADDITIONAL SUPPORTERS:

Carmine D. Boccuzzi, Jr.

Margaret and Michael Dees

Roni and Ethan Eller

Gina Maria Leonetti

Michael and Gabrielle London Palitz

Richard Plepler

Brynn Putnam and Kevin Thau

Risk Strategies

Sandbar Concession, Inc.

Simpson Thacher & Bartlett LLP

Susan Wasserstein and George Sard

OUR DONORS AND SUPPORTERS

Second Stage is a 501(c)3 organization which relies on contributions and support from Individuals, Foundations, Corporations, and Government Agencies. The ongoing support and generosity of our donors allows us to fulfill our mission of championing the work of contemporary American playwrights.

INDIVIDUAL SUPPORTERS

Our Champions are the heartbeat of our theater. They support our artistic programs and initiatives. As a thank you, we offer a number of events which provide opportunities to interact with artists, playwrights, and other theater professions.

From a Season Kick-off Event, to Champions Luncheons, evenings and backstage tours, our Champions had a front row seat to our season.

ARTISTIC DIRECTOR'S CIRCLE

\$50,000 AND ABOVE

Anonymous
Lauren and Bill Bright
Kevin Brockman and Dan Berendsen
Barbara and Rodgin Cohen
Margaret Lee Dees and Michael Dees
Mark and Liette Eichorn
Israel and Claude Englander
Laurie Erlandson
Melissa and Gregory Fleming
Alyse Graham and Colin Stretch
Peter and Laura Grauer Foundation
Mary Tavener Holmes
Janice Lee and Joseph Bae
Gina Maria Leonetti
Robert and Terry Lindsay
The Judith Champion Charitable Fund
and Mel Litoff
Jan McAdoo
Mari Nakachi and Dan Simkowitz
Alice and Daniel Pachtod
Sarah Pontius
Emilia Saint-Amand
Motoko Sakurai
Kitty and Stephen Sherrill
Christopher Skinner and Nicholas Alvoeiro

Stewart R. Smith and Robin A. Ferracone

John Sorkin and Jessica Jacobson

Bobbi and Ralph Terkowitz

Brynn Putnam and Kevin Thau

Martin Toner

Susan Wasserstein and George Sard

PLAYWRIGHTS CIRCLE

\$25,000 - \$49,999

Anonymous
Mia and Fergus Campbell
Christopher and David R. Murray
Robert and Kate Niehaus
Michael Palitz and Gabrielle London Palitz
Dean Pitchford and Michael Mealiffe
Bambi Putnam
Jayne Baron Sherman
Michael Singleton
Candace Weir

DIRECTORS

\$15,000 - \$24,999

Terry and Mary-Jane Hogan
Janet Lynne Knopf
James Lapine and Sarah Kernochan
Martin and Tristan Mannion
Musa and Tom Mayer
Lee Wolf and Jordan Cohen

PRODUCERS

\$10,000-\$14,999

Anonymous
Jen Ablon
Louis Antonelli
David Benkof
Elizabeth and Rodney Berens
Cynthia Coudert
Tony Goldwyn and Jane Musky
Robert and Sydney Kindler
Sarah Kupferman
Dre and Pitch Lindsay
Chien Cho Liu
Marianne and Steve Mills
Janet Middleton Montag
Mary and Garrett Moran
Adrian J. and Anne Perry
Renée Petrofes and Gerald McNamara
Pesha Rudnick and Rob Wright
The Estate of Mark H. Schwarz
Christine and Stephen Schwarzman
Christopher Shyer
David Sorkin and Amy Davidson Sorkin
Natasa and Michael Valocchi
Rita and Ken Warner

LEADERS

\$6,500-\$9,999

Christine Amorossi
Jess Cagle
Keely and J.T. Compton
The Fred and Suzan Ehrman Foundation
James Gleick
Laurie Goldberger and Leslie Kogod
Angie and Evan Herring
Bruce Horten
Barbara Raho
Matthew Schermerhorn and Andy Rice
Margaret Stern

SPONSORS

\$4,000-\$6,499

Anonymous
Jody and John Arnhold
Robi and Ruth Blumenstein
Janel Callon
Betsy Cohn
Sheri Beth Feigen
Herbert and Cynthia Fields
Steven Galbraith
Robert Goldberg
Robyn Goodman
Leila Govi
Carol Greenwald
Glenn Gundersen
David Herz and Janet Stahl
David Kernahan
Eileen and John Kim
Joseph Lupariello
Francie McKenzie
Nancy, Brittany, and Alex Molesworth
John and Wendy Motulsky
Niclas Nagler and David Alberto Alvarez
Robert and Joann Nash
Lisa Orberg
Katheryn Patterson and Thomas Kempner Jr.
Robert Press
Paul Taubman
Mary Beth and Alan Wilmit
Meryl and Charles Witmer
John Yarmick
Christian and Lonna Yegen

CORPORATE MEMBERSHIP PROGRAM

Second Stage Theater offers members of its Corporate Membership Program a variety of participation opportunities for both executives and employees, through complementary tickets, invitations to events and more. Our corporate members are also acknowledged publicly throughout the season.

Thank you to our 2025 Corporate Supporters.

\$50,000+

Latham & Watkins LLP
Lindsay Goldberg
Select Equity Group

\$25,000 - \$49,999

American Express
Citi
Cravath, Swaine & Moore LLP
Deloitte
Innisfree M&A Inc.
Lazard
PJT Partners
Popular, Inc.
Sullivan & Cromwell LLP

\$10,000 - \$24,999

B&G Foods
Centerview Partners
Color Force
Compass Lexecon
Con Edison
Covington & Burling LLP
Davis Polk & Wardwell LLP
Disney
EY
Flagstar Bank
Goldman Sachs
Kirkland & Ellis LLP
M&T Bank
Medallion Financial Corp.

Paul, Weiss, Rifkind,
Wharton & Garrison LLP
Petra Funds Group
Rockefeller Capital Management
Ropes & Gray LLP
Sandbar Concessions

\$5,000 - \$9,999

The Durst Organization
Marsh
Warner Bros. Discovery

\$2,500 - \$4,999

Simpson, Thacher & Bartlett LLP

FOUNDATIONS

Second Stage receives vital support from many foundations, trusts, and government agencies.

Thank you to our Foundation partners.

\$50,000+

Bloomberg Philanthropies
The Howard Gilman Foundation
Jerome L. Greene Foundation
Fund in the New York
Community Trust
Horace W. Goldsmith
Foundation
Marc Haas Foundation
Blanche and Irving Laurie
Foundation
New American Voices Fund*
New York City Department of
Cultural Affairs
New York State Council on the Arts
New York State Department
of Homeland Security and
Emergency Services
SHS Foundation

The Shubert Foundation, Inc.
The Harold & Mimi Steinberg
Charitable Trust

\$25,000 - \$49,999

AVK Cultural Heritage Fund
Leon Levy Foundation
Peter R. Gimbel & Elga Andersen
Gimbel Memorial Trust
The Fan Fox and Leslie R.
Samuels Foundation

\$10,000 - \$24,999

Michael Tuch Foundation
The Hyde & Watson Foundation
Tobin Theatre Arts Fund

\$5,000 - \$9,999

The Allen Family Foundation

Charles Culpeper Fund in the
New York Community Trust
The Chuck Lorre Family
Foundation

Office of New York City Council
Member Eric Bottcher
Jerome Robbins Foundation
Theatre Development Fund

\$2,500 - \$4,999

Lucille Lortel Foundation
Richenthal Foundation

\$1,000 - \$2,499

Actors' Equity Foundation
A.R.T./New York
The Lambs Foundation

BOARD

BOARD OF TRUSTEES

TRUSTEES WHO SERVED DURING THE 2024-2025 SEASON

Kevin Brockman, Co-Chair

Terry Lindsay, Co-Chair

Lauren Bright

Mia Campbell

Debra Martin Chase

Laurie Erlandson

Tony Goldwyn

Alyse Graham

Mary Taverner Holmes

Janet Lynne Knopf

Sarah Kupferman

Margaret Lee Dees

Gina Maria Leonetti

Mari Nakachi

Robert Nash

Alice Pachtod

Gabrielle Palitz

Adrian Perry

Sarah Pontius

Bambi Putnam

Brynn Putnam

Pesha Rudnick

Nathan E. Saint-Amand

Motoko Sakurai

Stephen C. Sherrill*

Michael Singleton

Cristopher Skinner

Stewart Smith

John Sorkin

Angela Sun

Dre Taylor Lindsay

Roberta S. Terkowitz

Martin Toner

Natasa Valocchi

Susan Wasserstein

Candace K. Weir

*Chairman Emeritus

ADVISORY BOARD

Uzo Aduba

Amith Chandrashaker

Steve Cohen

Joshua Dachs

Rajiv Joseph

Ian McKellen

Joe Morton

Emilio Sosa

David Stone

Meryl Streep

Tessa Thompson

Bess Wohl

Liza Colón-Zayas

Second Stage Theater's programs are made possible by public funds from the New York City Department of Cultural Affairs in partnership with the City Council, and by the New York State Council on the Arts with the support of the Office of the Governor and the New York State Legislature.



Second Stage Theater appreciates the extraordinary support of the Paycheck Protection Program and the Shuttered Venue Operators Grant Program of the U.S. Small Business Administration.



LAND ACKNOWLEDGMENT

We acknowledge the land on which Second Stage Theater stands — the original homeland of the Munsee Lenape and Wappinger Lenape people — and honor and pay our respects to the many diverse indigenous peoples still connected to this land.

2NDSTAGE

1501 BROADWAY, SUITE 518, NEW YORK, NY 10036
P. (212) 787-8302 2ST.COM